

UniSite-xpi/UniSite™ V8.6 User Notes

Contents

What's New in Version 8.6	2
Reminders	5
Determining if UniSite Has Hard Drive	6
Creating Floppy Diskette Set from CD	7
Quick Update Steps	9

IMPORTANT: V8.6 does not support updating the Hard Drive (MSM) from floppy diskettes. To update your Hard Drive, see "TaskLink (WIN) and UniSite-xpi (or UniSite with Hard Drive)" on page 10.

IMPORTANT: For issues regarding floppy diskette support, see "Creating Floppy Diskette Set from CD" on page 7.

IMPORTANT: TaskLink™ DOS users need to upgrade to V2.09 or greater in order to have access to all supports in this UniFam V8.6 software update. Version 2.09 of TaskLink DOS is available on the UniFam V8.6 CD or from the Data I/O Web site. See Readme.txt in the TaskLink DOS directory for installation instructions.

Note: If you received these User Notes with a new programmer, you do not need to update your software.

Note: All UniSite-xpi programmers are shipped with a hard drive installed. To determine if your (legacy) UniSite has a hard drive, see "Determining if UniSite Has Hard Drive" on page 6.

To use this update, your UniSite-xpi/UniSite must have a minimum of 2 MB of RAM available (displayed at the top of the UniSite-xpi/UniSite screen). However, to make maximum use of the programmer, 8 MB of RAM is required. If you need additional RAM, call your Customer Support office as listed in the Preface of your User Manual. In the U.S., call 1-800-332-8246.

What's New in Version 8.6

- ◆ **Device Lists on “UniFam 8.6/TaskLink 7.20” CD**

Lists of new and updated devices can be found on the “UniFam 8.6/TaskLink 7.20” CD in \Update_Info.

- ◆ **Update from CD**

The “UniFam 8.6/TaskLink 7.20” CD contains all the software required for updating your programmer. TaskLink™ for Windows® allows for easy installation of “UniFam 8.6” CD contents (Boot File, System Files, and Algorithm Sets).

For instructions on how to install “UniFam 8.6” programmer software from CD, see TaskLink for Windows Help and select “How to Update System Software.”

Please note that after inserting the “UniFam 8.6/TaskLink 7.20” CD into your CD drive, the TaskLink install program will begin. If you do not wish to install the latest version of TaskLink, simply close the TaskLink install program. You must use TaskLink 4.50 or greater to install your UniFam V8.6 programmer software update.

Note: Software updates from CD work only on programmers with a hard drive. To check if your programmer has a hard drive, see “Determining if UniSite Has Hard Drive” on page 6. Contact Data I/O Sales for information on upgrading your programmer to a hard drive.

- ◆ **TaskLink DOS Version Requirement**

TaskLink DOS users need to upgrade to V2.09 or greater in order to have access to all supports in this V8.6 software update. Version 2.09 of TaskLink DOS is available on the UniFam V8.6 CD or from the Data I/O Web site. See **Readme.txt** in the TaskLink DOS directory for installation instructions.

- ◆ **Philips Semiconductor Changes**

Effective in V7.3, Philips Semiconductor requested that we update the following device menu selections to conform with their latest programming specification changes:

Old Name	Now Called
89C51RB2	89C51RB2H
89C51RB2-PLC	89C51RB2H-PLCC
89C51RC2	89C51RC2H
89C51RC2-LQFP	89C51RC2H-LQFP
89C51RC2-PLCC	89C51RC2H-PLCC
89C51RD2	89C51RD2H
89C51RD2-PLCC	89C51RD2H-PLCC

- ◆ **Devices Now Listed under SST Only**

Prior to the V7.9 update, the devices listed below were located under both Manufacturer: SST and Manufacturer: Silicon Stor. Starting with V7.9 and thereafter, these devices are listed only under Manufacturer: SST.

Device Name	Package	Pins
39VF512	DIP	32
39VF512-PLCC	PLCC	32
39VF512-TSOP	TSOP	32
39VF010	DIP	32
39VF010-PLCC	PLCC	32
39VF020	DIP	32
39VF020-PLCC	PLCC	32
39VF020-TSOP	TSOP	32
39VF040	DIP	32
39VF040-PLCC	PLCC	32
39VF040-TSOP	TSOP	32
29EE512	DIP	32
29EE512	PLCC	32
29EE512	TSOP	32
29EE010	DIP	32
29EE010	PLCC	32
29EE010	TSOP	32
29EE020	DIP	32
29EE020	PLCC	32
29EE020	TSOP	32

- ◆ **Parallel Port Upgrade Available**

Software support for parallel port upgrade configurations of the UniSite (with Hard Drive) is available beginning with V6.7. The parallel port makes data download up to 600% faster using TaskLink™ for Windows®.

To obtain this upgrade, please call your Customer Support Office as listed in the Preface of your User Manual. In the United States, call 1-800-3-DATAIO.

- ◆ **Mitsubishi Electric and Hitachi Transferred to Renesas Technology Corp**
On April 1, 2003, the semiconductor operations of Mitsubishi Electric and Hitachi were transferred to Renesas Technology Corporation. These operations include microcomputer, logic, analog and discrete devices, and memory chips other than DRAMs (flash memory, SRAMs, etc.). Beginning in V7.4, a new menu selection appeared for Renesas Technology Corporation.

As a result of this transfer:

All devices currently distributed by Renesas Technology Corporation are found under the "Renesas Tech" menu selection.

All new supports (devices) distributed by Renesas Technology Corporation, regardless of the Mitsubishi or Hitachi part markings, are found only under the "Renesas Tech" menu selection.

All existing supports for Mitsubishi or Hitachi devices currently marketed by Renesas Technology Corporation are found under both their previous menu selections and the "Renesas Tech" menu selection. This dual listing prevents problems with customer Tasks.

- ◆ **UniSite-*xpi***

The UniSite-*xpi* offers many advantages in device programming. The parallel port interface allows for quick data downloads for large devices, with data throughput up to 600% faster than on the UniSite. With its integrated Mass Storage Module, the UniSite-*xpi* provides fast algorithm selection and high-capacity local data storage. And the UniSite-*xpi* is fully backwards compatible with previous software revisions and pre-compiled TaskLink Tasks or Kits. TaskLink™ for Windows® is included with the UniSite-*xpi*.

For information on how to connect and configure the UniSite-*xpi*, see TaskLink online help (version 4.21 or newer).

- ◆ **Footnotes on UniSite**

For those customers still working with floppy diskettes, the UniSite will prompt for the installation of the footnote diskette. At this point, the footnote diskette may be put in place of the algorithm diskette and **ENTER** pressed on the keyboard. This will cause the footnote to be displayed. To skip the display of the footnote, leave the algorithm diskette in the programmer and press **PF1** or **PF2**.

Reminders

- ◆ **Data I/O's Web Site Replaces 'Device List on Disk'**

Have you been using the Device List on Disk for your device information? As we announced in an earlier edition of these User Notes, we have upgraded our device support and information tools to take advantage of the power, speed, and accessibility of the World Wide Web. Since the release of V6.1, all our device support information, device footnotes, and capacitor block configuration information is on the Web. Our Web address is <http://www.dataio.com>. Data I/O has stopped distributing the Device List on Disk. If you would like a device list, download it from http://www.dataio.com/ftp/device_lists/uni.txt

- ◆ **Changes to Computer Remote Control (CRC) in V6.8**

Beginning with V6.8, new CRC commands were added for:

- Programmer type query
- Device type query
- Device Electronic ID query
- Fill RAM with non-repeating test pattern
- Device list query
- Selection for checksum type
- Stand-alone device erase operation
- Updating programmer software

For specific information about these new CRC commands, please see the updated UniSystem Computer Remote Control application note (983-0490-005) available on the Data I/O Web site at <http://www.dataio.com>.

Beginning in V6.7, the 49] command in CRC mode first issues a prompt before returning to Terminal Mode so that XPI programmers can return an error message if nothing is connected to the serial port.

- ◆ **Changes to Terminal Mode in V6.8**

Beginning in V6.8, the "Device Configure Edit" screen appears under the Main Menu in Terminal Mode when a device is selected with options that can be edited. For all other device types, the **More Commands** menu is positioned lower on the screen than in previous versions. Note that the "Device Configure Edit" screen is also still available from the **More Commands/Device Checks/Device Configure** menu.

The appearance of the "Device Configure Edit" screen changed in V6.8. With some newer sectored devices, it became possible to set the Begin Device and Device Block Size parameters from the "Device Configure Edit" screen. Also, the control-K option (^K) was added in V6.8. Pressing ^K changes the display and entry of sector information to an abbreviated mode useful for devices with a large number of sectors. Please refer to the Help feature for more information.

Beginning in V6.8, device operation block limit parameters are reset to defaults when a new device type is selected. Previously, device operation block limit parameters were reset only if their values exceeded the size of the newly selected device.

- ◆ **Improved Checksum Calculation With Devices Using Sector Protect**

This change only affects filling the programmer RAM with “FF” before you program a 16-bit device. In versions of software before V5.9, if you entered sector protect data, only the least significant byte of the 16-bit word in RAM was changed. For example, if you entered sector protect data “01”, the 16-bit word would read “FF01”. All sectors were protected correctly but a different device checksum was calculated because the “FF” in the most significant byte (“FF01”) was added into the device checksum. In software version 5.9 and later, when you enter sector protect data “01”, the 16-bit word in the programmer’s RAM will be entered as “0001”. This modification was made so the high order byte does not change the device checksum reported at the end of the programming cycle.

Determining if UniSite Has Hard Drive

All UniSite-*xpi* programmers are shipped with a hard drive installed.

To determine if your (legacy) UniSite has a hard drive, go to the Main Menu (press F1 to return to the Main Menu) and go to:

More Commands/Configure System/Mass Storage

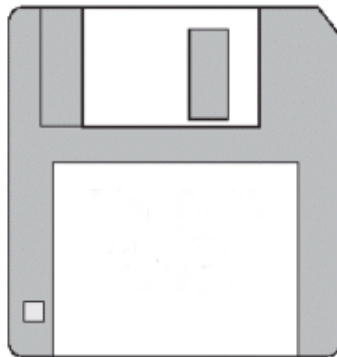
- ◆ If you do see **Mass Storage** at the lower left side of the **Configure Systems/Parameters** menu, you have a hard drive.
- ◆ If you do not see **Mass Storage** at the lower left side of the **Configure Systems/Parameters** menu, you do not have a hard drive.

Turn to the Table of Contents on page 9 of these User Notes to select the appropriate Quick Update Steps for your programmer.

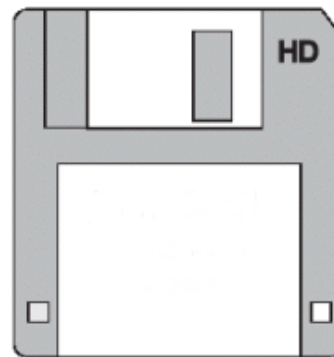
Creating Floppy Diskette Set from CD

If your UniSite does not have a Mass Storage Module (MSM), you will need to perform the following steps to create a set of system floppy diskettes from the “UniFam 8.6/TaskLink 7.20” CD. If you would like more information regarding upgrade options, call your Customer Support office as listed in the Preface of your User Manual. In the U.S., call 1-800-332-8246 (1-800-3-DATAIO).

You will need 10 **low density 720KB 3.5"** floppy diskettes for the complete disk creation process. Low density floppy diskettes are referred to as 2DD and can be differentiated from high-density 1.44MB diskettes by the lack of the “HD” logo embossed on the plastic disk jacket:



Low Density Diskette



High Density Diskette

Blank 3.5" floppy diskettes are probably available at your local computer or office supply store. Additionally, these online vendors ship internationally and carry diskettes suitable for use with Data I/O products:

<http://www.compusa.com> or <http://www.cdw.com>

- 1** Boot your UniSite programmer using a previous version of software. After the UniSite is booted, enter terminal mode. If using TaskLink for Windows, click **Tools >Programmer Interface** to enter terminal mode. If using TaskLink for DOS, click **Utilities > Programmer Interface** to enter terminal mode.
- 2** In terminal mode, press the following keys: **F1, M, F, F**. This moves you through the menu to the **FORMAT DISK** screen:

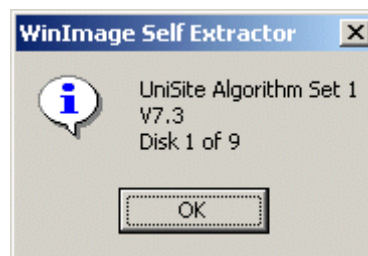


FORMAT DISK screen

- 3** On the FORMAT DISK screen, move the cursor to “Are you sure (Y/N)?” and press **Y**.
- 4** Insert a blank 720KB floppy disk into the right floppy disk drive on your UniSite (drive B). Press **ENTER** on your keyboard to format the floppy disk.
- 5** Repeat the formatting process for the remainder of the disks.
- 6** Insert the “UniFam 8.6/TaskLink 7.20” CD into your PC's CD-ROM drive.
- 7** Browse to the 'X:\floppies\uni_v86' directory (where X is the CD-ROM drive).

Note: When you insert the “UniFam 8.6/TaskLink 7.20” CD into your PC, the TaskLink v5.5 install program will auto-launch. You may either install TaskLink at this time, or cancel and install it at a later time.

- 8** Click on the first file in the directory to launch the WinImage Self Extractor.
- 9** A status window will pop up describing the disk contents for this image. To create a label for the disk, copy the content information from the monitor onto a floppy diskette label for use in Step 11 below.



Status window describing disk contents

- 10** When prompted, insert a disk (formatted as described above) into your PC's floppy diskette drive. Click **OK** to start the disk creation process.
- 11** After the disk is created, attach the floppy diskette label.
- 12** Repeat Step 8 through Step 11 and select the next file in the directory until you have completed the entire disk set.

Quick Update Steps

Note: If you received these User Notes with a new programmer, you do not need to update your software.

If you are using:	Go to page:
TaskLink (WIN) and UniSite-xpi (or UniSite with Hard Drive)	10
Approved Terminal and UniSite-xpi (or UniSite with Hard Drive)	15
TaskLink (DOS) or PROMlink and UniSite (without Hard Drive)	17
HiTerm and UniSite (without Hard Drive)	18
Approved Terminal and UniSite (without Hard Drive)	20

TaskLink (WIN) and UniSite-xpi (or UniSite with Hard Drive)

Note: For instructions on how to install “UniFam 8.6” programmer software from CD, please see TaskLink™ for Windows® on-screen Help and select “How to Update System Software.”

UniFam V8.6 does not support updating the Hard Drive (MSM) from floppy diskettes. Regardless of the interface you use to operate your programmer, you must use TaskLink for Windows (version 4.50 or greater) to update your system software and algorithms from CD.

1 Turn off UniSite/UniSite-xpi. Ensure that the RS-232C cable from the PC is connected to the **Remote** port on UniSite/UniSite-xpi. If a cable is connected to the Terminal port, disconnect it.

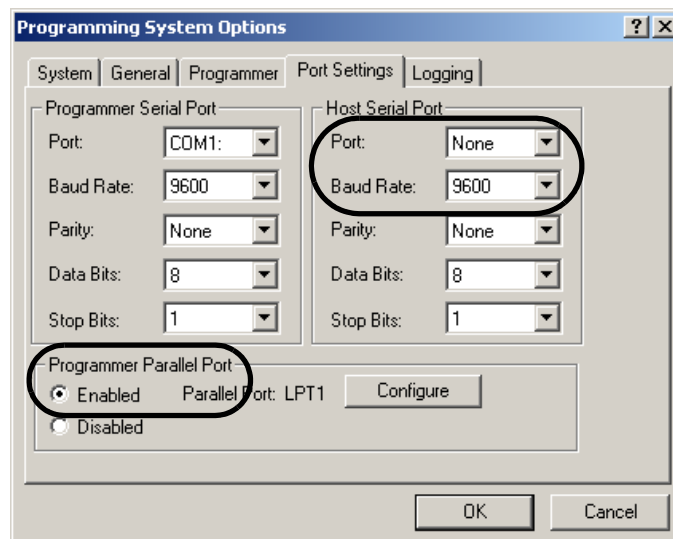
2 Insert the “UniFam 8.6/TaskLink 7.20” CD in your PC’s CD drive. The TaskLink installation program will begin.

Note: If you do not wish to install the latest version of TaskLink, close the TaskLink installation program. However, you must use TaskLink 4.50 or greater to install your UniFam V8.6 programmer software update.

3 Open TaskLink for Windows (version 4.50 or greater) by clicking on the TaskLink (WIN) icon on the desktop or by clicking the **Start** button, opening **Programs**, and launching the TaskLink (WIN) application.

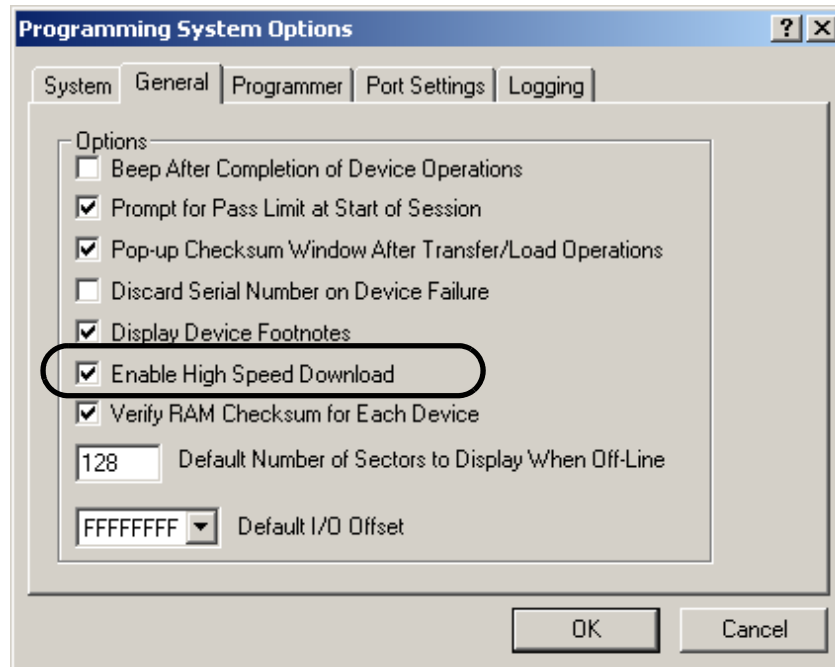
4 From TaskLink’s **System** menu, select **Options**, go to the **Port Settings** tab and verify that the Host port is set to None, and the PC’s COM port (Host Serial Port) is set to 9600 baud (the default baud rate on the programmer system disks).

Note: If you have a UniSite-xpi with the parallel port connected, select “Enabled” for the Programmer Parallel Port.



- 5** From TaskLink's **System** menu, select **Options**, go to the **General** tab and select "Enable High Speed Download."

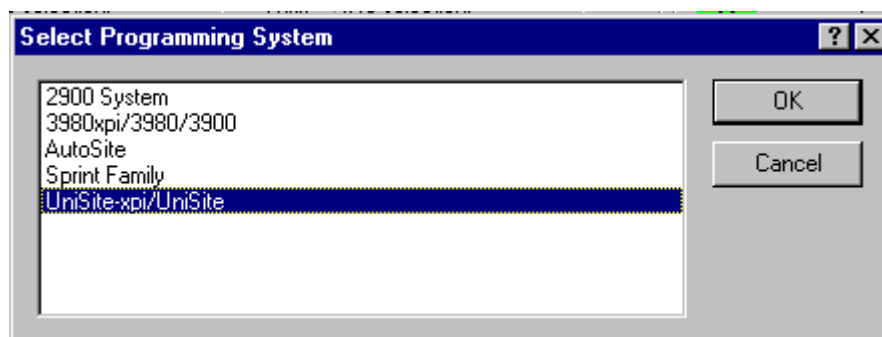
Note: Regardless of whether you use the serial port or the parallel port for communicating with your UniSite, enable high speed download during the update from CD process. You can disable high speed download after the update is completed.



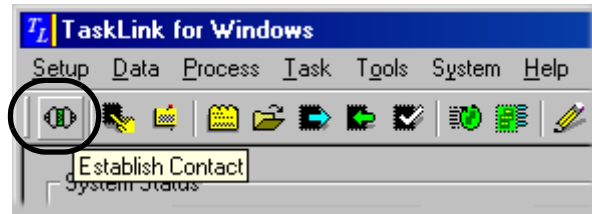
- 6** Turn on the UniSite/UniSite-xpi.

IMPORTANT: If you are running UniFam V6.7 or older, you will need a **Boot Files Disk** in order to turn on the UniSite/UniSite-xpi. See "Creating Floppy Diskette Set from CD" on page 7 for instructions on creating a **Boot Files Disk** from the "UniFam 8.6/TaskLink 7.20" CD. Insert the **Boot Files Disk** in the disk drive and turn on the UniSite-xpi/UniSite.

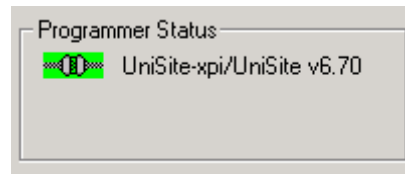
- 7** From TaskLink's **System** menu, select **Select Programming System**. Select **UniSite-xpi/UniSite** and click **OK**.



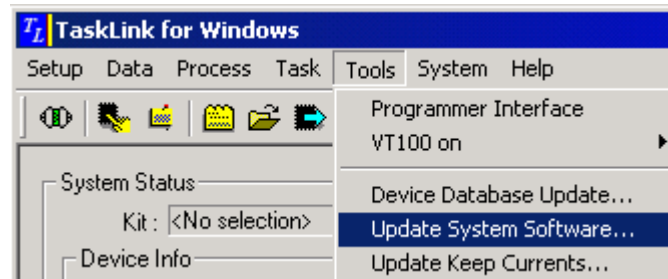
- 8 Click the **Establish Contact** icon in the upper left corner of the TaskLink main screen.



- 9 Verify programmer contact has been established by checking the **Programmer Status** area on the TaskLink main screen. The **Programmer Status** area displays **UniSite-xpi/UniSite** and the current system software version.

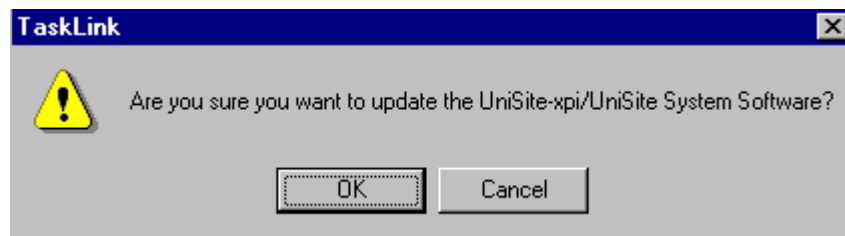


- 10 From TaskLink's **Tools** menu, select **Update System Software**.

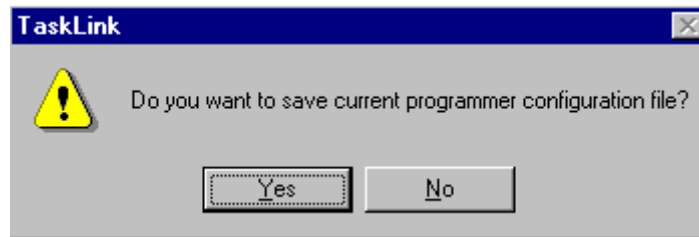


- 11 When prompted, select **OK** to update system software.

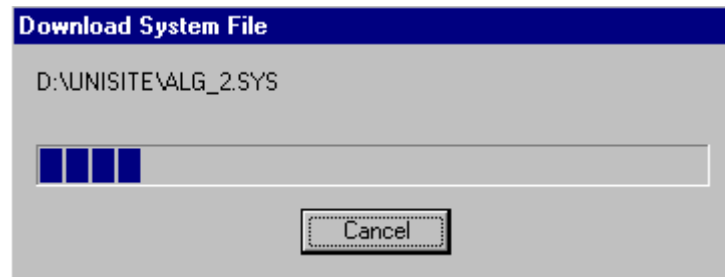
Note: The update takes 5 to 15 minutes to complete if high speed download is enabled. Without high speed download enabled, the update can take up to 60 minutes to complete.



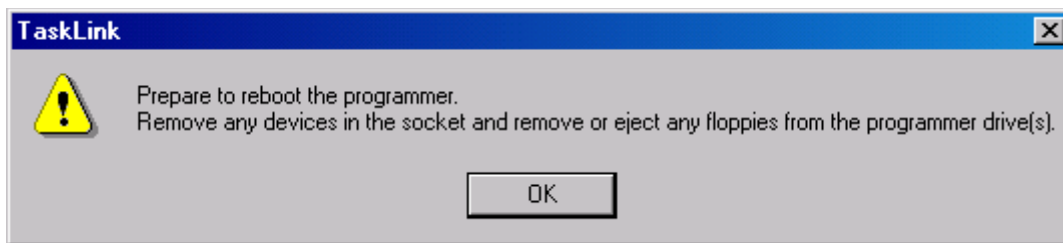
12 Click **Yes** to save the current programmer configuration file.



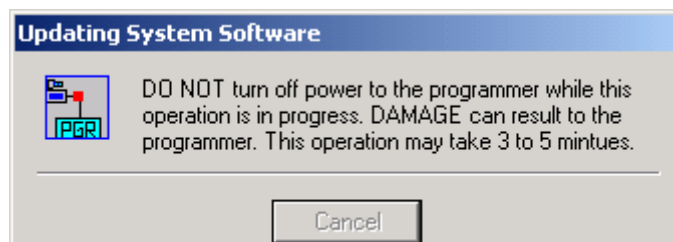
13 TaskLink displays update progress.



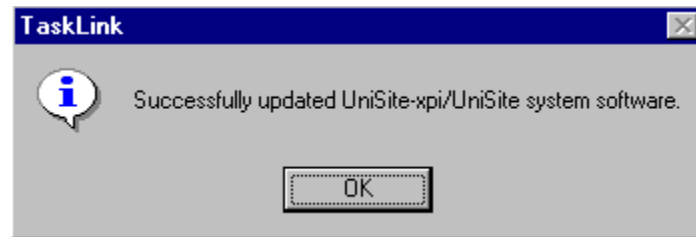
14 When prompted, prepare the UniSite/UniSite-*xpi* for restarting by removing devices and floppy diskettes.



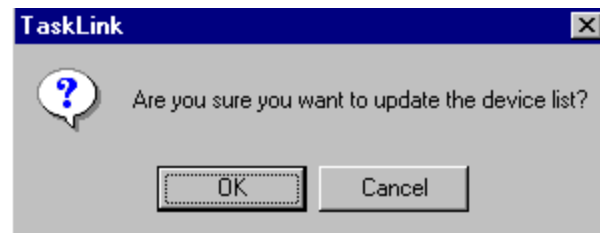
15 After the download is complete, TaskLink displays the Updating System Software dialog. **DO NOT** turn off power to the programmer while this dialog is displayed.



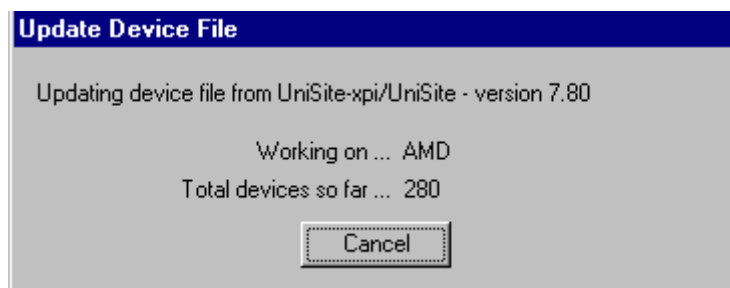
16 When the system software update is complete, click **OK**.



17 At the prompt to update the device list, click **OK**.



18 TaskLink displays the progress of updating device files.



19 Click **OK**.



This completes the Hard Drive update process.

Approved Terminal and UniSite-xpi (or UniSite with Hard Drive)

Note: Regardless of the interface you use to operate your programmer, you must use TaskLink for Windows 4.50 or greater to update your system software and algorithms from CD. For instructions on how to update system software and algorithms, install TaskLink for Windows and see TaskLink online Help topic "How to Update System Software." Once the update is completed, you may uninstall TaskLink for Windows and continue to use your preferred interface to operate your programmer.

- 1** Turn off UniSite-xpi/UniSite. Make sure the cable connecting UniSite-xpi/UniSite and the terminal is connected to UniSite-xpi/UniSite's Terminal or Remote port and that UniSite-xpi/UniSite is set up properly as described in Chapter 2 of the *UniSite-xpi User Manual*.
- 2** Insert the copy of the new Boot Files Disk in the left drive and the new Algorithm Set 1 disk in the right drive and turn on UniSite-xpi/UniSite.
- 3** Once UniSite-xpi/UniSite has completed the boot process, one of the following will apply, depending on which port your PC is connected to.

- a) If the PC is connected to the UniSite-xpi/UniSite Terminal port, the following prompt is displayed:

`Do you want to select a new terminal type (Y/N) [N]`

If the current terminal type is `DEC VT100`, press `ENTER`. The Main Menu is displayed. Go to "TaskLink (DOS) or PROMlink and UniSite (without Hard Drive)" on page 17.

If the current terminal type is not `DEC VT100`, press `Y` and then `ENTER`. Select the appropriate terminal type and press `ENTER` to accept the selection. UniSite-xpi/UniSite responds with the following prompt:

`save terminal type as power on default (Y/N) [N]`

Press `Y` and then `ENTER` to save this terminal type as the powerup default. The Main Menu is displayed. Go to "TaskLink (DOS) or PROMlink and UniSite (without Hard Drive)" on page 17.

- b) If the PC is connected to the UniSite-xpi/UniSite Remote port, at the ">" prompt, press `Z` (Capital Z) and then `ENTER`. The following prompt is displayed:

`Do you want to select a new terminal type? (Y/N) [N]`

If the current terminal type is `DEC VT100`, press `ENTER`. The Main Menu is displayed. Go to "TaskLink (DOS) or PROMlink and UniSite (without Hard Drive)" on page 17.

If the current terminal type is not `DEC VT100`, press `Y` and then `ENTER`. Select the appropriate terminal type and press `ENTER` to accept the selection. UniSite-xpi/UniSite responds with the following prompt:

`save terminal type as power on default (Y/N) [N]`

- c) Press **Y** and then **ENTER** to save this terminal type as the powerup default. The Main Menu is displayed. Go to “TaskLink (DOS) or PROMlink and UniSite (without Hard Drive)” on page 17.

TaskLink (DOS) or PROMlink and UniSite (without Hard Drive)

Note: TaskLink DOS users will need to upgrade to V2.09 or greater in order to have access to all supports in this UniFam V8.6 software update.

- 1** Turn off UniSite. Ensure that the RS-232C cable from the PC is connected to the **Remote** port on UniSite. If a cable is connected to the Terminal port, disconnect it.
 - 2** Type **tl a** (for TaskLink) or **pl** (for PROMlink) at the DOS prompt.
 - 3** From the **Options** menu, select **Programmer Port** and verify that the PC's COM port is set to 9600 baud (the default baud rate on the programmer system disks) and the Host port is set to None.
 - 4** From the **Utilities** menu, select **VT100 on Programmer Port**. A blank screen is displayed.
 - 5** Insert the copy of the new Boot Files Disk in the left drive and the new Algorithm Set 1 disk in the right drive and turn on UniSite.
 - 6** After the ">" is displayed, press **ALT+F1** to exit VT100 terminal mode and return to the TaskLink or PROMlink menu.
 - 7** From the **Utilities** menu, select **Device List Update** to update the TaskLink or PROMlink device file so that it includes the new devices supported by UniSite.
- The update is now complete.** If you wish to carry the configuration file (**sysparm.sys**) forward from your old System Disk to the new Boot Files Disk, continue with step 8.
- 8** Return to the DOS prompt, insert the old System Disk (with the files you wish to carry forward), and copy the **sysparm.sys** file to your hard drive by entering
copy drive1: sysparm.sys drive2 (*drive 1 is the System Disk drive; drive2 is where the file will be stored*)
 - 9** Remove the System Disk, insert the new Boot Files Disk (write-enabled), and copy the **sysparm.sys** file to the Boot Files Disk by entering
copy drive2: sysparm.sys drive1:sysparm.sys (*drive2 is the location of the stored file*)
 - 10** From the **Utilities** menu, select **VT100 on Programmer Port**. A blank screen is displayed. Type **49]** and then press **ENTER** to enter Terminal mode. Press **F1** (turn on Caps Lock).
 - 11** Remove the Boot Files Disk from the PC and insert it into UniSite. In the **More Commands/Configure System/Restore** screen, press **F4** to reconstruct the parameter list.
Note: If you do not follow step 11, the next time you boot up UniSite with the new Boot Files Disk, system parameter field is out of date. Do you want to update it? will be displayed. Press Y and then ENTER to reconstruct the parameter list.
 - 12** Press **F1**. From the **More Commands** menu, select **Remote**. After the ">" is displayed, press **ALT+F1** to exit Terminal mode and return to the TaskLink or PROMlink menu.

HiTerm and UniSite (without Hard Drive)

If you only want to update your software, perform steps 1 through 5. If you want to carry the configuration file (**sysparm.sys**) forward from your old Boot Files Disk to the new Boot Files Disk, continue with steps 6 through 10.

- 1** Turn off UniSite. Make sure the cable connecting UniSite and the PC is connected to UniSite's Terminal or Remote port and that UniSite is set up properly as described in Chapter 2 of the *UniSite-xpi User Manual*.
- 2** Ensure that the communication parameters are set as follows: DEC VT-100 terminal emulation, 9600 baud, no parity, 8 data bits, 1 stop bit, and the COM port (usually COM1) connected to UniSite. If necessary, edit the **prg9600.cfg** file to match these settings.
- 3** Type **program** at the DOS prompt to start HiTerm.
- 4** Insert the copy of the new Boot Files Disk in the left drive and the new Algorithm Set 1 disk in the right drive and turn on UniSite.
- 5** Once UniSite has completed the boot process, one of the following will apply depending on which port your PC is connected to.

- a) If the PC is connected to the UniSite Terminal port, the following prompt is displayed:

```
Do you want to select a new terminal type (Y/N) [N]
```

If the current terminal type is **DEC VT100**, press **ENTER**. The Main Menu is displayed and the software is updated.

If the current terminal type is not **DEC VT100**, press **Y** and then **ENTER**. Select the appropriate terminal type and press **ENTER** to accept the selection. UniSite responds with the following prompt:

```
Save terminal type as power on default (Y/N) [N]
```

Press **Y** and then **ENTER** to save this terminal type as the powerup default. The Main Menu is displayed and the software is updated.

- b) If the PC is connected to the UniSite Remote port, at the ">" prompt, press **Z** (Capital Z) and then **ENTER**. The following prompt is displayed:

```
Do you want to select a new terminal type? (Y/N) [N]
```

If the current terminal type is **DEC VT100**, press **ENTER**. The Main Menu is displayed and the software is updated.

If the current terminal type is not **DEC VT100**, press **Y** and then **ENTER**. Select the appropriate terminal type and press **ENTER**. The following prompt is displayed:

```
Save terminal type as power on default (Y/N) [N]
```

Press **Y** and then **ENTER** to save this terminal type as the powerup default. The Main Menu is displayed and the software is updated.

The update is now complete. If you wish to carry the configuration file (**sysparm.sys**) forward from your old System Disk to the new Boot Files Disk, continue with step 6.

- 6** Return to the DOS prompt and insert the old System Disk (with the files you wish to carry forward) into the PC's disk drive.
- 7** Copy the **sysparm.sys** file to your hard drive by entering
copy drive1:sysparm.sys drive2 (*drive1 is the System Disk drive; drive2 is where the file will be stored*)
- 8** Remove the System Disk and insert the new Boot Files Disk (write-enabled).
- 9** Copy the **sysparm.sys** file to the Boot Files Disk by entering
copy drive2:sysparm.sys drive1:sysparm.sys (*drive2: location of stored sysparm.sys file*)
- 10** Remove the Boot Files Disk from the PC and insert it into UniSite. In the **More Commands/Configure System/Restore** screen, press **F4** to reconstruct the parameter list.

*Note: If you do not follow step 10, the next time you boot up UniSite with the new Boot Files Disk, **system parameter field is out of date. Do you want to update it?** will be displayed. Press **Y** and then **ENTER** to reconstruct the parameter list.*

Approved Terminal and UniSite (without Hard Drive)

If you only want to update your software, perform steps 1 through 3. If you want to carry the configuration file (**sysparm.sys**) forward from your old Boot Files Disk to the new Boot Files Disk, continue with steps 4 through 8.

- 1** Turn off UniSite. Make sure the cable connecting UniSite and the terminal is connected to UniSite's Terminal or Remote port, and that UniSite is set up properly as described in the "Connecting to a Terminal" section in Chapter 2 of the *UniSite-xpi User Manual*. The default baud rate is 9600.
- 2** Insert the copy of the new Boot Files Disk in the left drive and the new Algorithm Set 1 disk in the right drive and turn on UniSite.
- 3** Once UniSite has completed the boot process, one of the following will apply depending on which port your PC is connected to:

- a) If the PC is connected to the UniSite Terminal port, the following prompt is displayed:

```
Do you want to select a new terminal type (Y/N) [N]
```

If the current terminal type is **DEC VT100**, press **ENTER**. The Main Menu is displayed and the software is updated.

If the current terminal type is not **DEC VT100**, press **Y** and then **ENTER**. Select the appropriate terminal type and press **ENTER** to accept the selection. UniSite responds with the following prompt:

```
Save terminal type as power on default (Y/N) [N]
```

Press **Y** and then **ENTER** to save this terminal type as the powerup default. The Main Menu is displayed and the software is updated.

- b) If the PC is connected to the UniSite Remote port, at the ">" prompt, press **Z** (Capital Z) and then **ENTER**. The following prompt is displayed:

```
Do you want to select a new terminal type? (Y/N) [N]
```

If the current terminal type is **DEC VT100**, press **ENTER**. The Main Menu is displayed and the software is updated.

If the current terminal type is not **DEC VT100**, press **Y** and then **ENTER**. Select the appropriate terminal type and press **ENTER** to accept the selection. UniSite responds with the following prompt:

```
Save terminal type as power on default (Y/N) [N]
```

Press **Y** and then **ENTER** to save this terminal type as the powerup default. The Main Menu is displayed and the software is updated.

The update is now complete. If you wish to carry the configuration file (**sysparm.sys**) forward from your old System Disk to the new Boot Files Disk, continue with step 4. You need an IBM-compatible PC to perform the following steps.

- 4** Go to the DOS prompt and insert the old System Disk (with the files you wish to carry forward) into the PC's disk drive.

- 5** Copy the **syparm.sys** file to your hard drive by entering
copy drive1:syparm.sys drive2 (*drive1 is the System Disk drive; drive2 is where the file will be stored*)
- 6** Remove the System Disk and insert the new Boot Files Disk (write-enabled).
- 7** Copy the **syparm.sys** file to the Boot Files Disk by entering
copy drive1:syparm.sys drive2 (*drive1 is the System Disk drive; drive2 is where the file will be stored*)
- 8** Remove the Boot Files Disk from the PC and insert it into UniSite. In the **More Commands/Configure System/Restore** screen, press **F4** to reconstruct the parameter list.

*Note: If you do not follow step 8, the next time you boot up UniSite with the new Boot Files Disk, **system parameter field is out of date. Do you want to update it?** will be displayed. Press **Y** and **ENTER** to reconstruct the parameter list.*